

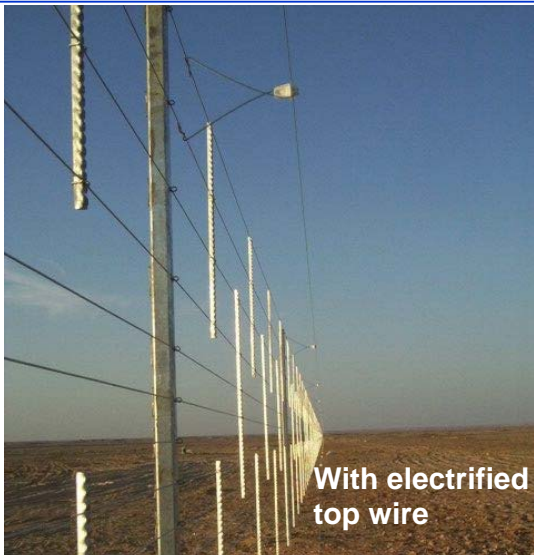
# Dropper Fencing



J B Corrie & Co. Ltd. The Fencing Specialists.



Expressway Fencing in Saudi Arabia.



With electrified top wire



Royal Windsor Park (UK)



Livestock Fencing in The Oman

# JB Corrie Dropper Fencing

For over 20 years J B Corrie & Co Ltd have supplied fencing to the Middle East, exporting our products to Saudi Arabia, UAE and Oman. We have become specialists in this field and are well placed to help advise and service your fencing requirements.



J B Corrie Dropper Fencing is one of the most cost effective systems around, requiring little maintenance it is unsurpassed for performance and value. Corrie Dropper fences consist of multiple high tensile wires tensioned by our proven ratchet winder system and locked into a grid pattern using a lattice of line posts and dropper bars.

RHS line posts are set at a maximum of 7.5m centres, with straining posts at a maximum of 300m centres (dependant on site conditions.)

Changes of direction can be made with additional straining posts.

Applications include:-  
Roadway and railway boundary fencing, camel, horse and other livestock fencing.

Top line wires can be replaced with barbed wires or electrified wires to suit your system requirements.



Gates of any size can be manufactured to suit at our factory.

All Steel work is European sourced to the appropriate British Standard, manufactured in our factory in the UK and hot dipped galvanised to BS 729

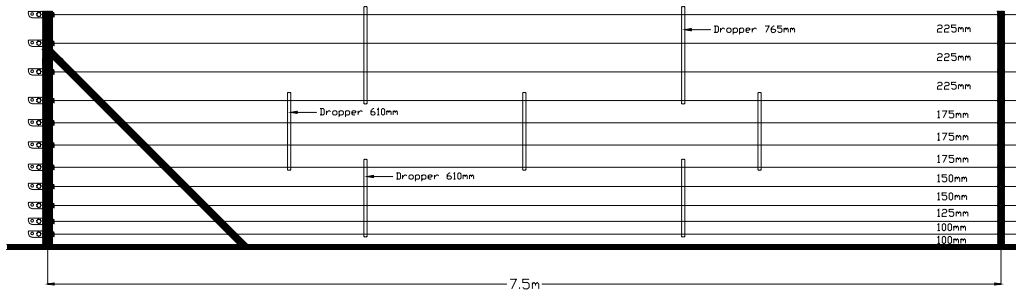
All 3.15mm High Tensile line wire is to BS 4102 and galvanised to BS443.

Height and line spacings can be specified to suit your requirements.

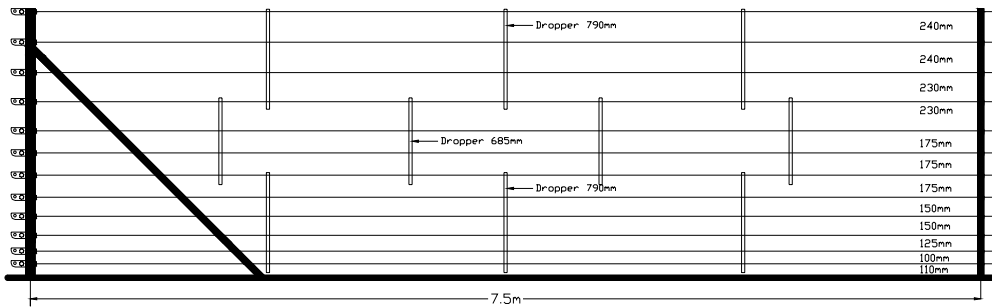


Limitless configurations of Dropper Fencing are available, such as;

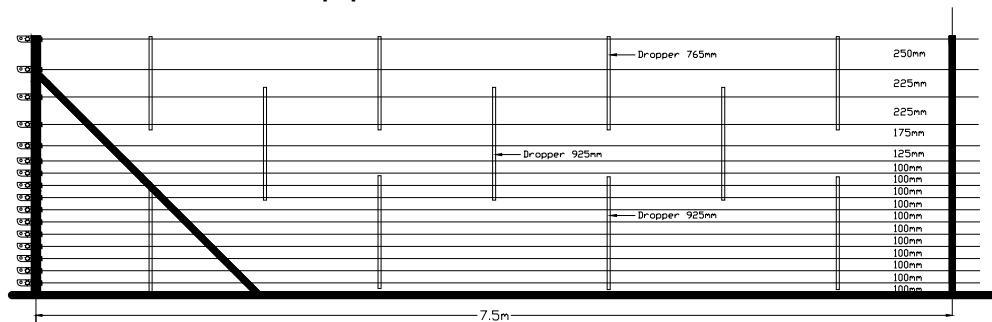
## 11 - Wire Dropper Fence Height: 1.8m



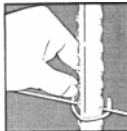
## 12 - Wire Dropper Fence Height: 2.1m



## 16 - Wire Dropper Fence Height: 2.1m



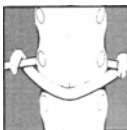
### Corries unique dropper fixing system



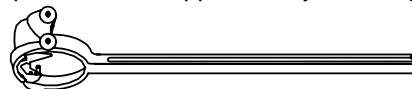
1. All wire fences should be strained as tightly as possible before fixing droppers, which can be commenced at either end of the fence line. Place the droppers vertically against the wires, allowing the wires to position themselves in the corresponding corrugations of the dropper. With thumb and forefinger hold the clip round the nose of the droppers.



2. With the handle of the dropper tool held vertically, pass the tool under the wire with the swivelling body piece resting on the rounded nose of the dropper. Apply sufficient pressure to the handle of the tool lightly to grip the clip, and then transfer the hand so that the thumb holds the wire and the middle finger steadies the bottom of the tool.



3. Bring the handle of the tool completely down until the rollers form the clip around the wire as shown in close up. Release dropper tool by returning handle to the vertical position.

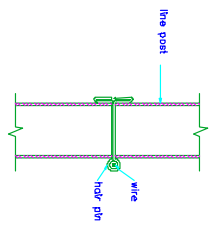
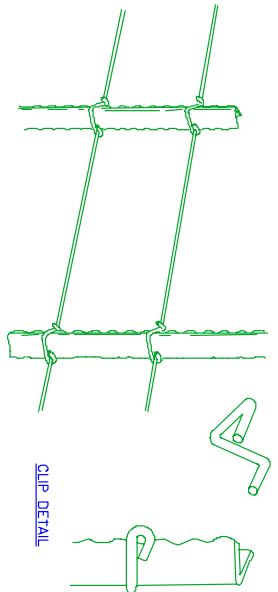
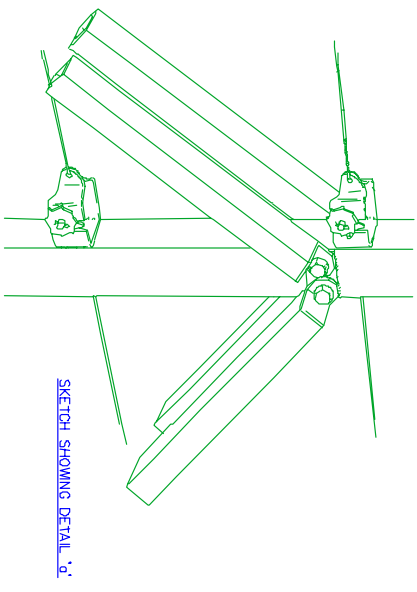
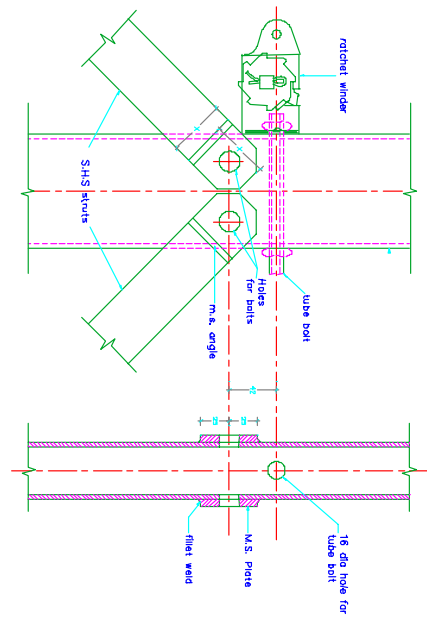
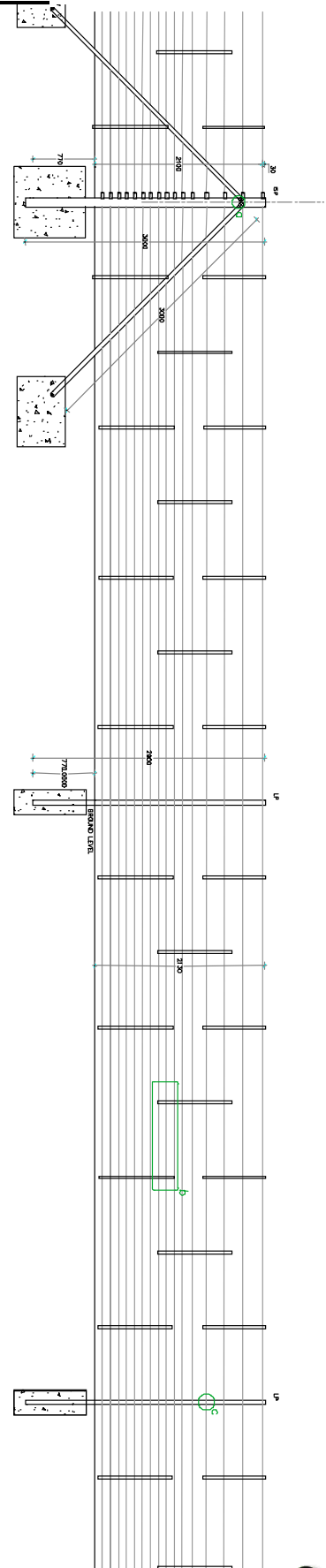


Dropper clip fixing tool

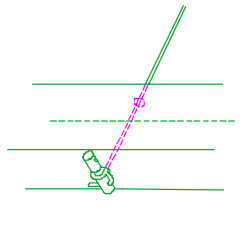
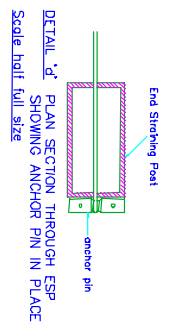
JB Corrie Dropper Fencing



# Typical Layout and Specification



DETAIL 'c' HAIR PIN THROUGH LINE POST TO RETAIN LINE WIRE



SKETCH SHOWING DETAIL 'd'

