

A

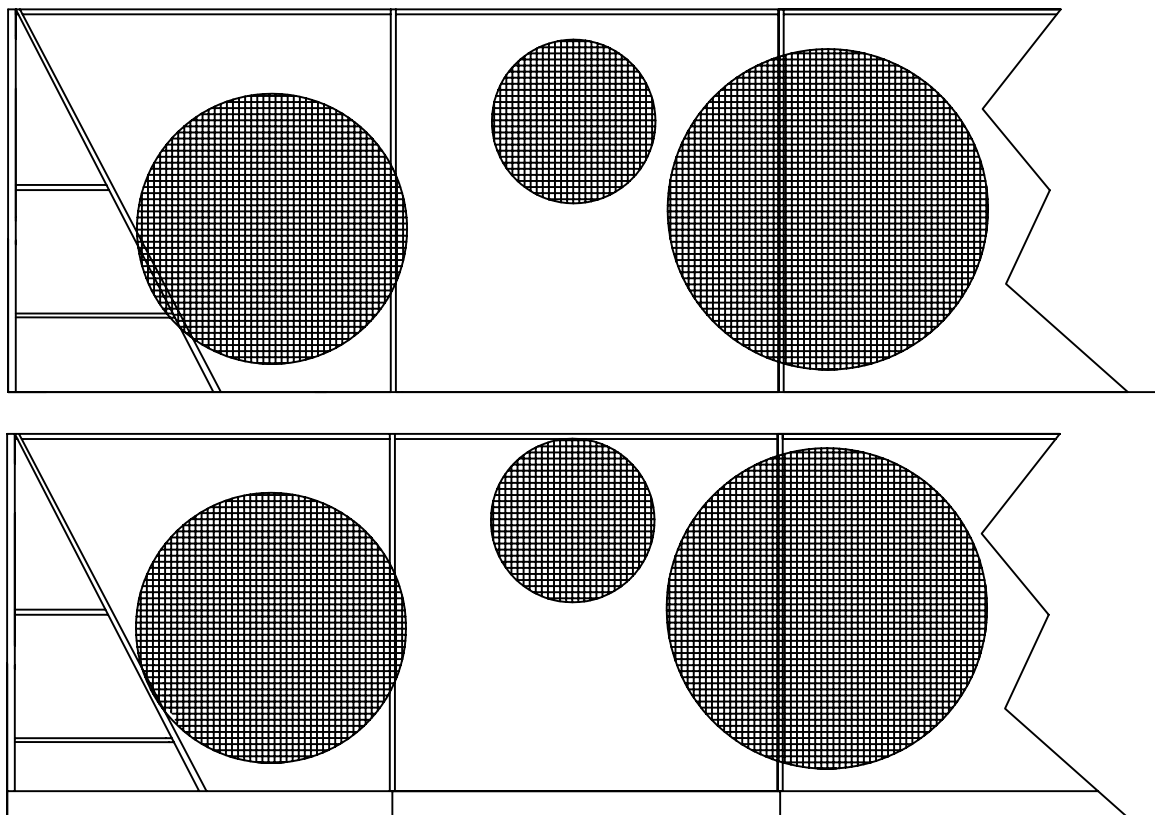
B

C

D

E

F



3m high 50x3mm welded mesh fence

50x30x3mm rhs posts

50x3mm galvanised or 50x3/3.5mm galvanised and plastic coated green or black welded mesh

High tensile linewires c/w stainless steel clips

50x3mm welded mesh is erected to posts in two lifts from rolls, typically 1.8m & 1.5m mesh is attached to linewires with stainless steel clips, all supported on the rhs lineposts set in concrete at maximum 3m centres (as per detail)

Straining posts to be typically 60x60x3mm rhs c/w necessary fittings and struts and set in concrete

Single leaf gate typically 1.2m wide between posts x 2m high + lintel panel over to 3m, gate end posts typically 60x60x3mm rhs

Double leaf gate typically 3m wide between posts x 2.5m high + lintel panel over to 3m, gate end posts typically 60x60x3mm rhs

Optional Hockey Kickboard (as lower image to the left) to be 150 - 250mm wide in increments of 25mm and 38 or 50mm thick treated softwood sawn, planed timber upon request but will be treated after planing which may result in grain lift which can mistake it for sawn - samples upon request

NOTE - struts shown and may be included or deleted for cost savings however if high tensile linewires are used, and they should be, the straining posts without struts may distort/bend under wire strain

**JB Corrie & Co. Limited**

Fencing Contractors & Manufacturers



Frenchmans Road

Petersfield

Hants

GU32 3AP

Email: [fencing@jbcorrie.co.uk](mailto:fencing@jbcorrie.co.uk)

Tel: 01730 237100

Fax: 01730 264915

Web: [www.jbcorrie.co.uk](http://www.jbcorrie.co.uk)

JBC Ref.: JB Corrie

JB Corrie : JB Corrie

Drg. no.: JBC\_WM\_3M\_126

Scale: Not to Scale

Paper Size: A4

Drawn by & date:

Reviewed by & date:

LR

LR - 21.01.09

Description: 3m 50x3mm mesh

Site: not known

Revision history:

Notes:

1. All dimensions in mm unless otherwise indicated.